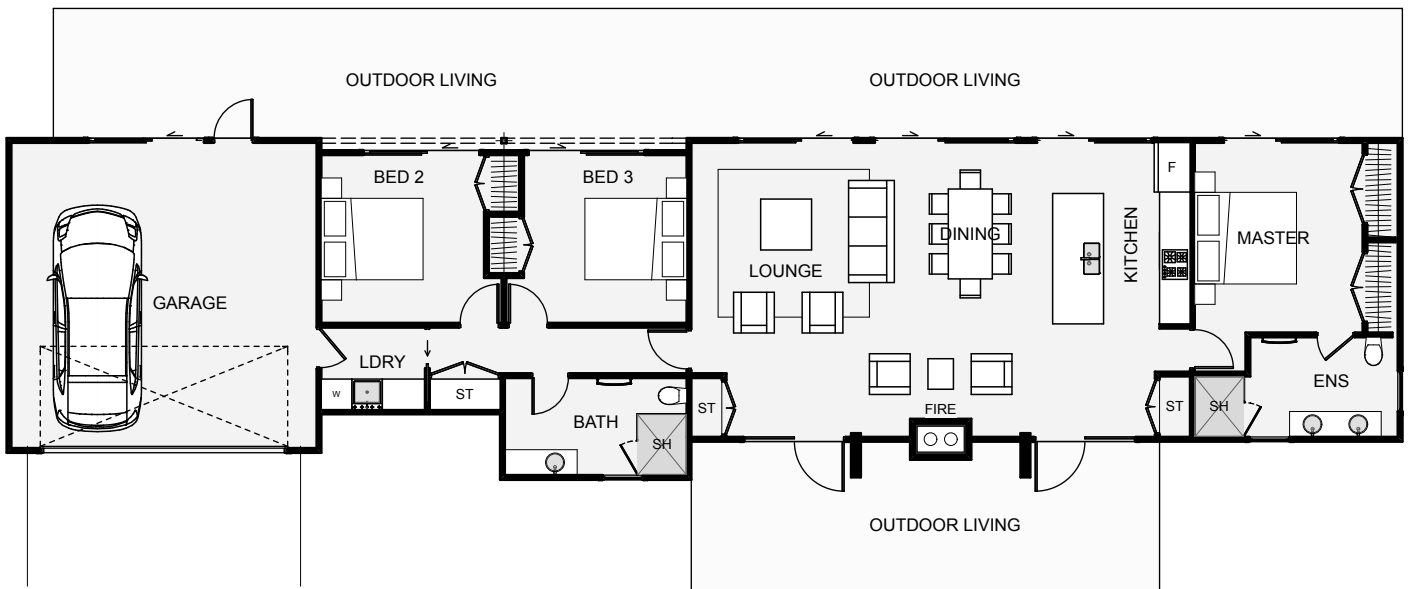







bellahomes
STYLISH LIVING

The Bruno is a narrow home designed to have all rooms facing the same way. This makes it easy if you have a great lawn, a view or just want all rooms to get the same amount of sun throughout the day. Something nice about this home is the glass doors and overhead window in the garage, making this large space usable for parties, games room and more. The dual outdoor living gives an option to end the day around a back-to-back fireplace, all while enjoying the evening sunset.



Floor Area: 164m²


 2  3  2  27.4m  6.7m

Contact us
09 438 6399
Simon Crawford 027 543 7750
www.bellahomes.co.nz




bellahomes
STYLISH LIVING



-  Council fees
-  Block base
-  \$5000 earthworks allowance
-  \$5000 drainlaying allowance
-  Coloursteel Roofing
-  Floor coverings
-  Double glazing
-  Fully Tiled showers / frameless glass doors
-  Methven tapware
-  Comprehensive lighting & electrical plan
-  LED lighting throughout
-  \$22000 kitchen allowance
-  Fisher & Paykel appliances
-  \$2700 master bedroom wardrobe allowance
-  Ingersol Rand high quality door hardware
-  Gas water heating /fireplaces
-  Interior designer consultation
-  10yr Masterbuild guarantee.