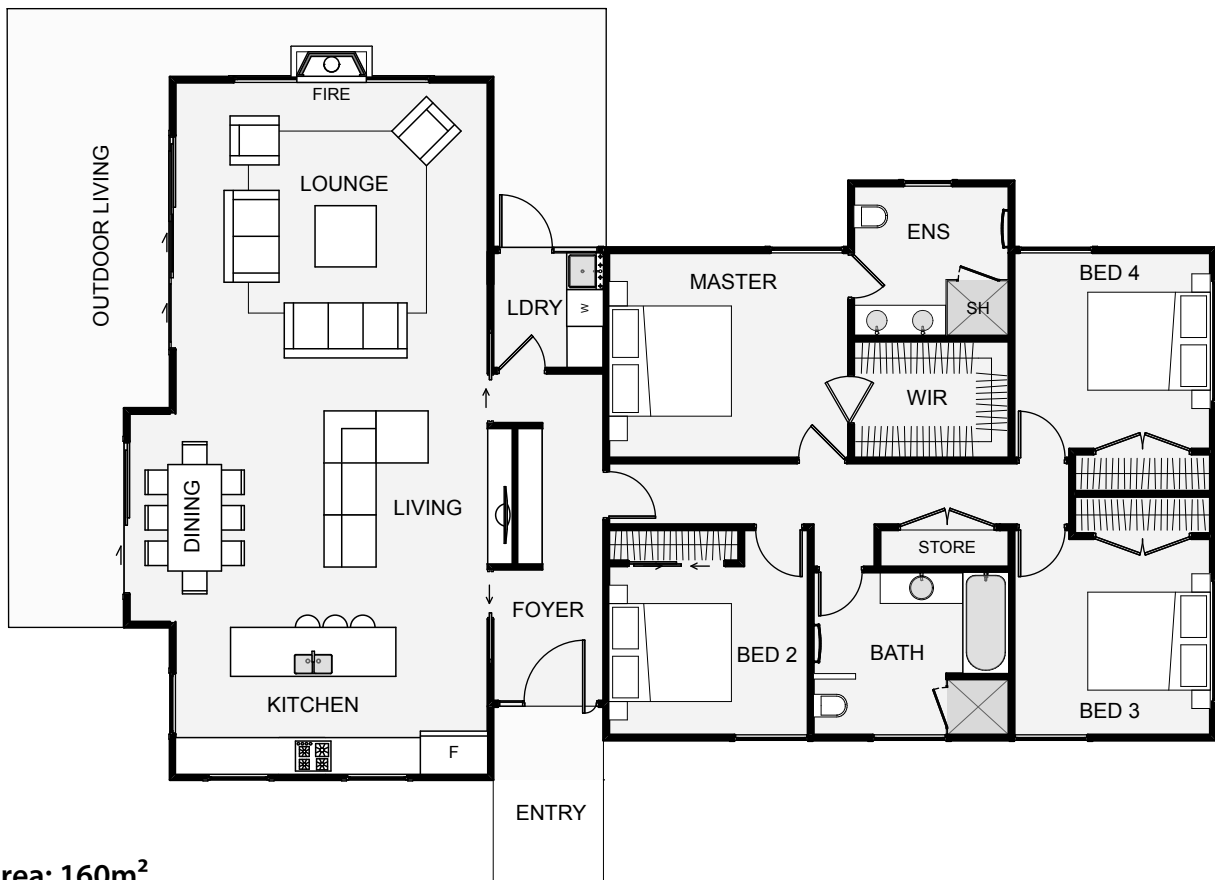






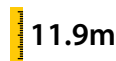


**bellahomes**  
STYLISH LIVING

The Hart is small and compact yet is designed to feel large and open. The large glass windows bring in the surrounding environment and the high ceilings in the living space open the place up to feel larger than life. This home is designed to allow the natural integration of a garage into multiple sections of the house depending on its location or orientation. The Hart can be used as a bach or a home, either would be a great architectural, four bedroom choice.



Floor Area: 160m<sup>2</sup>

 0  4  2  17.8m  11.9m

Contact us  
09 438 6399  
Simon Crawford 027 543 7750  
[www.bellahomes.co.nz](http://www.bellahomes.co.nz)



  
STYLISH LIVING



  
bellahomes  
STYLISH LIVING

-  Council fees
-  Block base
-  \$5000 earthworks allowance
-  \$5000 drainlaying allowance
-  Coloursteel Roofing
-  Floor coverings
-  Double glazing
-  Fully Tiled showers / frameless glass doors
-  Methven tapware
-  Comprehensive lighting & electrical plan
-  LED lighting throughout
-  \$22000 kitchen allowance
-  Fisher & Paykel appliances
-  \$2700 master bedroom wardrobe allowance
-  Ingersol Rand high quality door hardware
-  Gas water heating /fireplaces
-  Interior designer consultation
-  10yr Masterbuild guarantee.