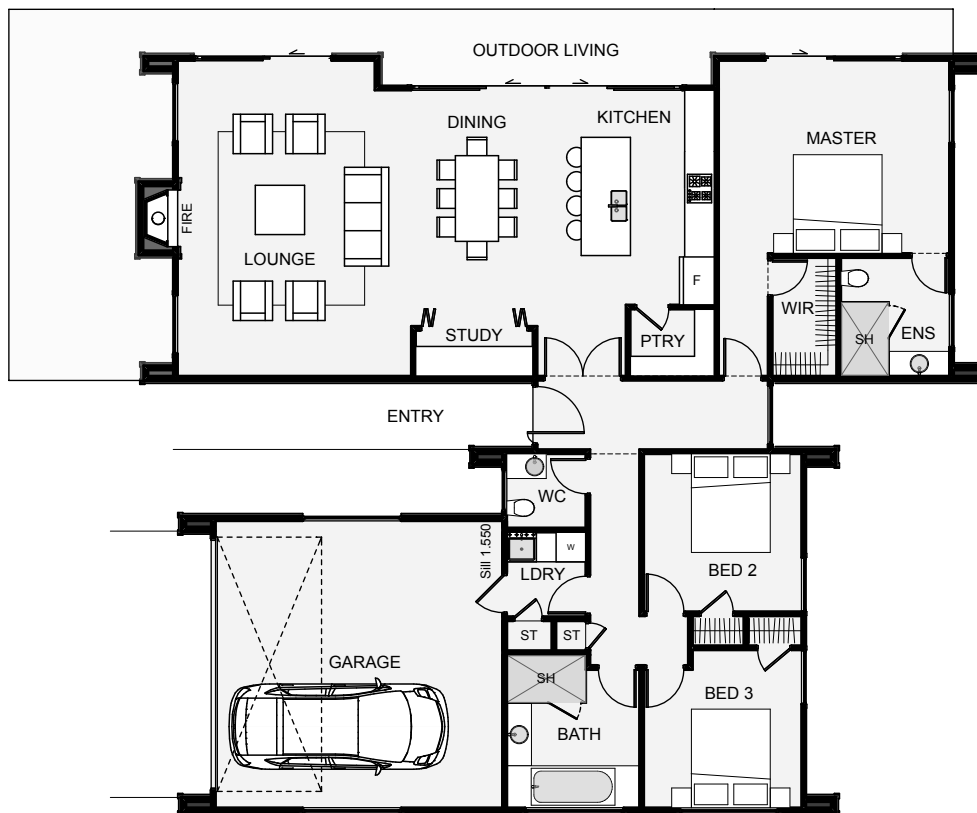








The Luna is a standout architectural home, especially with its use of cladding. The timber is positioned in the voids just like the flesh of a fruit when cut, while the metal wraps around the exterior like an organic skin. The shape of the home however, is very abstract. The layout is comprised of two wings with bedrooms on each end, this is to give the bedrooms great morning sun coverage. The lounge and living are positioned to make the most of sunlight right throughout the day.



Floor Area: 190m<sup>2</sup>

 2
  3
  2
  17.1m
  15.3m

Contact us  
09 438 6399  
Simon Crawford 027 543 7750  
[www.bellahomes.co.nz](http://www.bellahomes.co.nz)





-  Council fees
-  Block base
-  \$5000 earthworks allowance
-  \$5000 drainlaying allowance
-  Coloursteel Roofing
-  Floor coverings
-  Double glazing
-  Fully Tiled showers / frameless glass doors
-  Methven tapware
-  Comprehensive lighting & electrical plan
-  LED lighting throughout
-  \$22000 kitchen allowance
-  Fisher & Paykel appliances
-  \$2700 master bedroom wardrobe allowance
-  Ingersol Rand high quality door hardware
-  Gas water heating /fireplaces
-  Interior designer consultation
-  10yr Masterbuild guarantee.