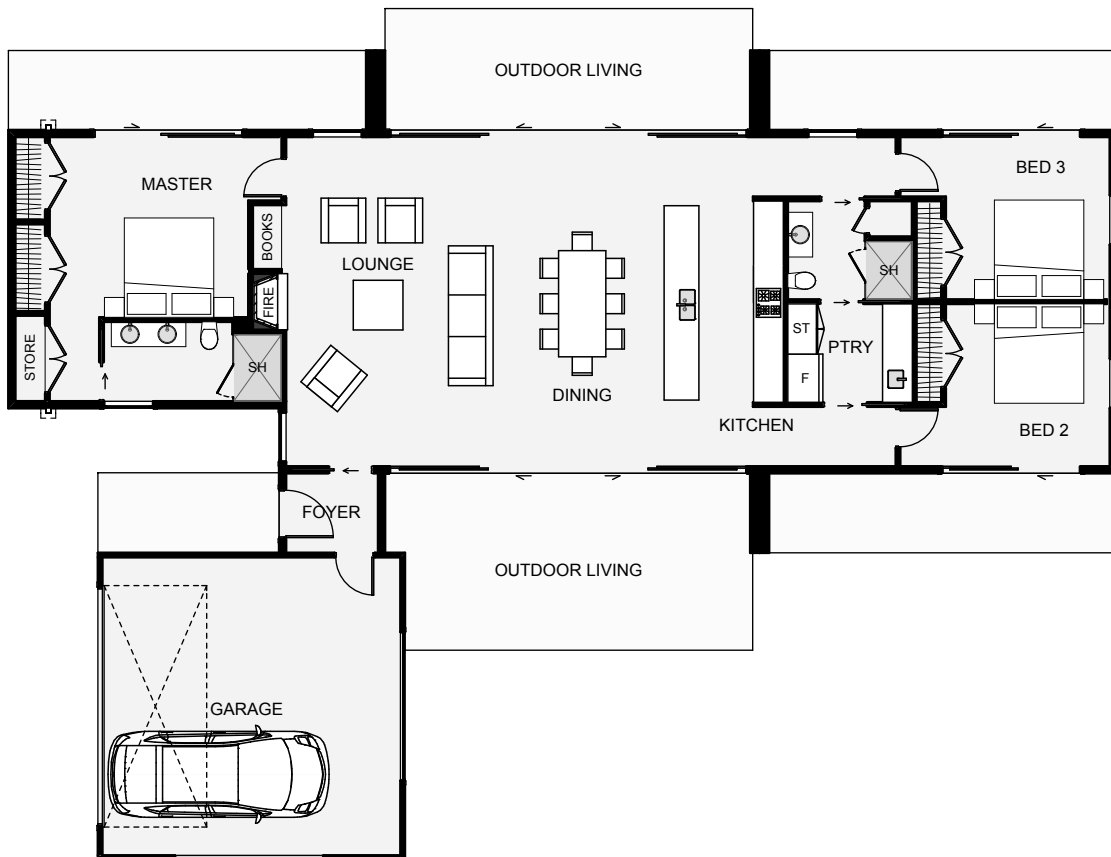










bellahomes
STYLISH LIVING

This home captures both modern and traditional architecture with its defined outlines bonding both into a strong, appealing home. The layout of this home is designed around simple lines, dual outdoor living and the general flow of modern living. The garage allows for a private and sheltered backyard and depending on the section, this home can be flipped, mirrored or rotated to suit.



Floor Area: 189m²

 2  3  2  22.3m  16.3m

Contact us
09 438 6399
Simon Crawford 027 543 7750
www.bellahomes.co.nz




bellahomes
STYLISH LIVING




bellahomes
STYLISH LIVING

-  Council fees
-  Block base
-  \$5000 earthworks allowance
-  \$5000 drainlaying allowance
-  Coloursteel Roofing
-  Floor coverings
-  Double glazing
-  Fully Tiled showers / frameless glass doors
-  Methven tapware
-  Comprehensive lighting & electrical plan
-  LED lighting throughout
-  \$22000 kitchen allowance
-  Fisher & Paykel appliances
-  \$2700 master bedroom wardrobe allowance
-  Ingersol Rand high quality door hardware
-  Gas water heating /fireplaces
-  Interior designer consultation
-  10yr Masterbuild guarantee.