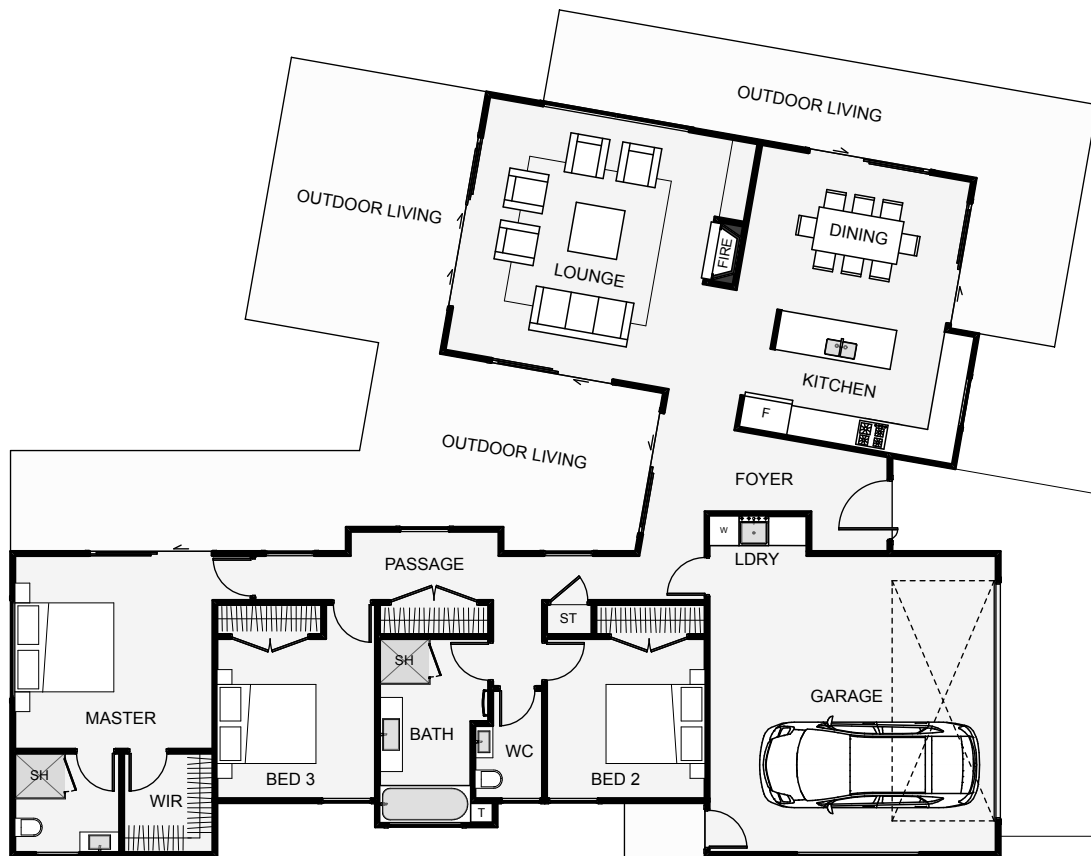









bellahomes
STYLISH LIVING

Two main wings provide the basic layout of this home. The bedroom wing is longer and provides the perfect shelter and privacy to the outdoor living and lawn space. By having the living wing set at an angle the kitchen and dining are positioned in the morning sun. The angle also gives a very sheltered outdoor living space between wings and a view angle from the lounge which reaches out into the property. This home could give your section the edge you're looking to create.



Floor Area: 186m²

 2
  3
  2
  20.0m
  15.5m

Contact us
09 438 6399
Simon Crawford 027 543 7750
www.bellahomes.co.nz



bellahomes
STYLISH LIVING



-  Council fees
-  Block base
-  \$5000 earthworks allowance
-  \$5000 drainlaying allowance
-  Coloursteel Roofing
-  Floor coverings
-  Double glazing
-  Fully Tiled showers / frameless glass doors
-  Methven tapware
-  Comprehensive lighting & electrical plan
-  LED lighting throughout
-  \$22000 kitchen allowance
-  Fisher & Paykel appliances
-  \$2700 master bedroom wardrobe allowance
-  Ingersol Rand high quality door hardware
-  Gas water heating /fireplaces
-  Interior designer consultation
-  10yr Masterbuild guarantee.