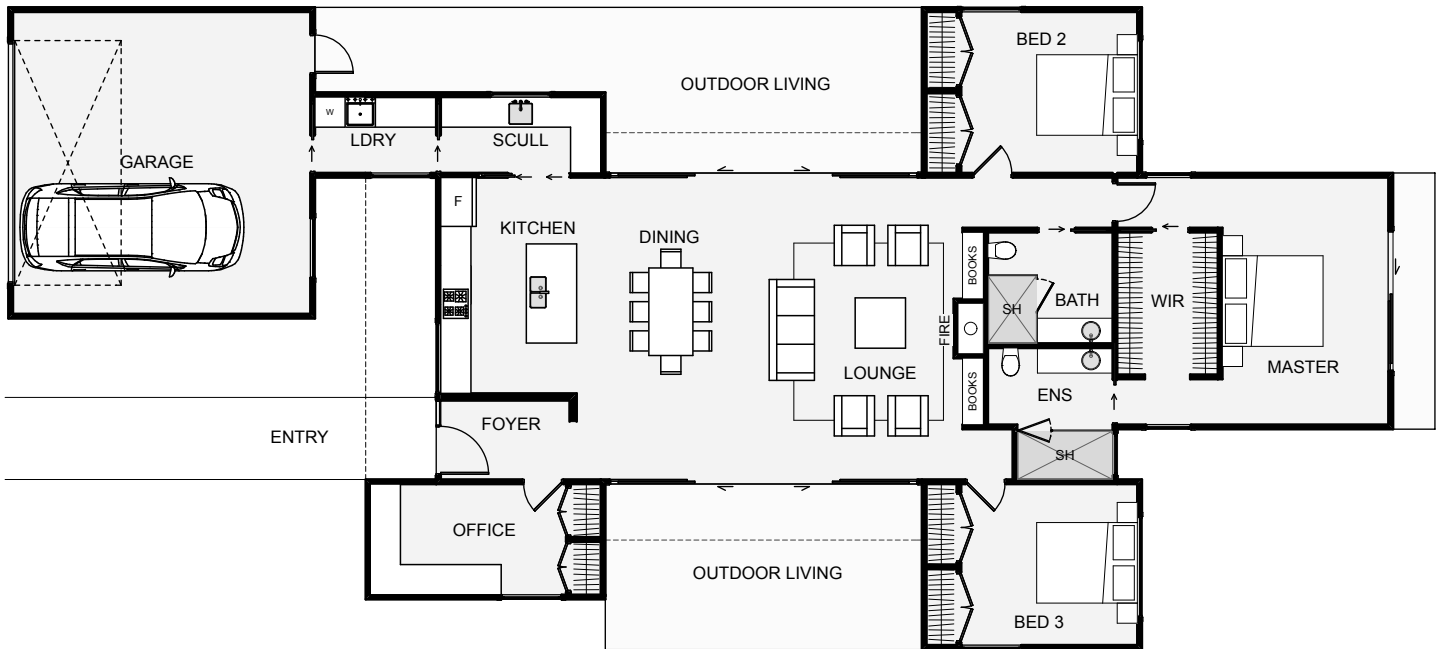




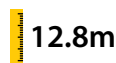




This home is semi symmetrical in shape, looks great with its length and includes very separate bedrooms. All bathroom plumbing is condensed in one location which keeps the pipework simple. The scullery is cleverly located as you walk in from the garage and through the laundry making grocery shopping a breeze. The living layout is simple yet effective and depending on the day, wind or time, you can pick your outdoor spot of choice which are both sheltered in design. The Zeus is a home with lots to offer.



Floor Area: 198m²

 2
  3+
  2
  27.5m
  12.8m

Contact us
09 438 6399
Simon Crawford 027 543 7750
www.bellahomes.co.nz






bellahomes
STYLISH LIVING

-  Council fees
-  Block base
-  \$5000 earthworks allowance
-  \$5000 drainlaying allowance
-  Coloursteel Roofing
-  Floor coverings
-  Double glazing
-  Fully Tiled showers / frameless glass doors
-  Methven tapware
-  Comprehensive lighting & electrical plan
-  LED lighting throughout
-  \$22000 kitchen allowance
-  Fisher & Paykel appliances
-  \$2700 master bedroom wardrobe allowance
-  Ingersol Rand high quality door hardware
-  Gas water heating /fireplaces
-  Interior designer consultation
-  10yr Masterbuild guarantee.